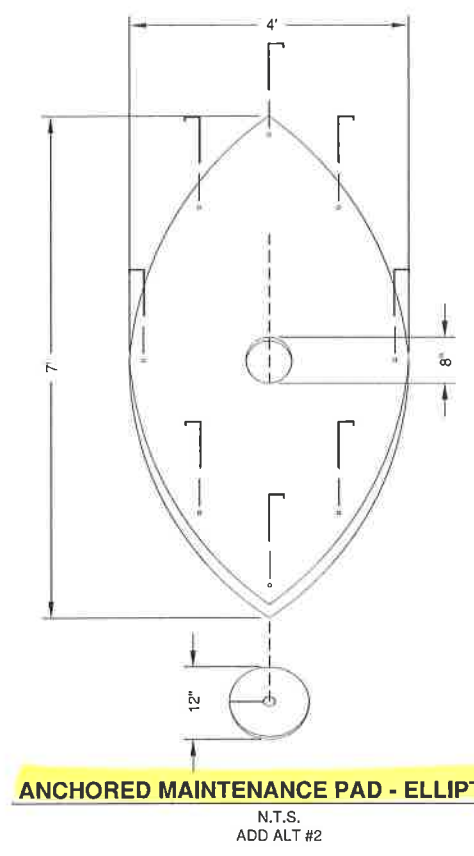


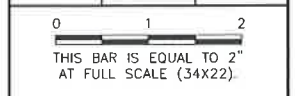
**AIRFIELD LIGHTING HANDHOLE DETAIL**  
N.T.S.

**NOTES**

- SEE LIGHTING PLAN FOR NUMBER SIZE AND LOCATION OF CONDUITS.



REVISIONS		
NUMBER	BY	DATE



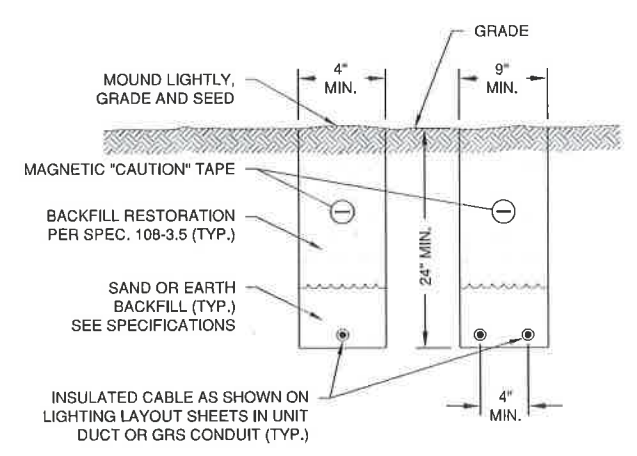
FAIRFIELD COUNTY AIRPORT AUTHORITY  
 FAIRFIELD COUNTY AIRPORT  
 LANCASTER, OHIO

TAXIWAY B LIGHTING REHABILITATION  
 AIRFIELD LIGHTING DETAILS SHEET 2 OF 2



BID SET

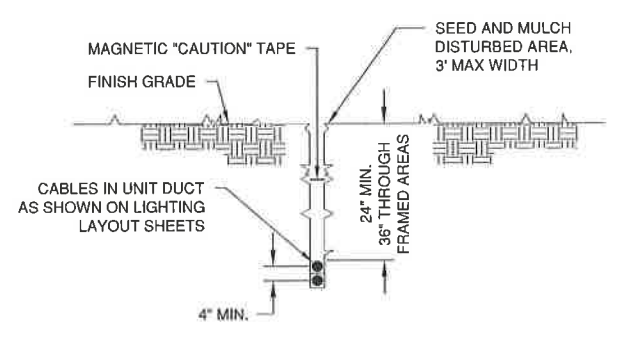
DESIGN BY:	CMT
DRAWN BY:	CMT
CHECKED BY:	
APPROVED BY:	
DATE:	4/5/2018
JOB No:	17650-01
SHEET 12 OF 12 SHEETS	



**TRENCH DETAIL**  
N.T.S.

**NOTES**

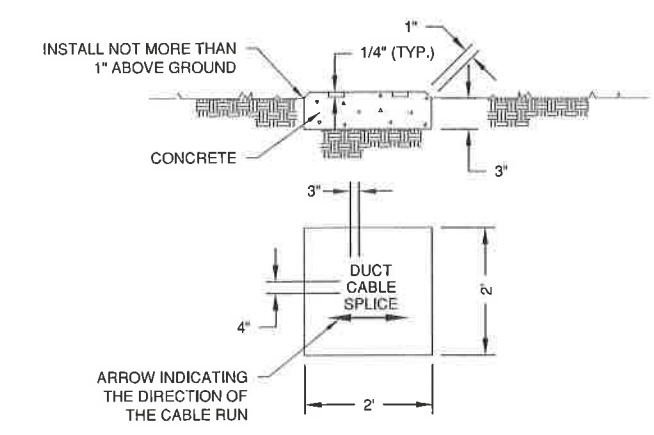
- TRENCHES WITH MORE THAN TWO (2) CABLE/DUCT SHALL BE INCREASED BY 3-INCHES IN WIDTH FOR EACH ADDITIONAL CABLE/DUCT. IF SPECIFIED ON PLANS, TWO PARALLEL TRENCHES SHALL BE CONSTRUCTED.
- MINIMUM TRENCH DEPTH SHALL BE 24-INCHES THROUGH TURF AND UNDER PAVED AREAS AND 36-INCHES IN FARMED AREAS.
- SAND BACKFILL SHALL BE USED IF THE EXISTING SOIL DOES NOT MEET THE BACKFILL REQUIREMENTS.
- ALL DISTURBED SURFACES SHALL BE RESTORED TO THEIR ORIGINAL CONDITION. COST IS INCIDENTAL TO CABLE/DUCT.



**CABLE IN UNIT DUCT - PLOWED**  
N.T.S.

**NOTES**

- CONTRACTOR SHALL HAVE THE OPTION TO TRENCH OR PLOW UNIT DUCT. NO ADDITIONAL PAYMENT SHALL BE MADE FOR TRENCHING.



**TURF CABLE / DUCT / SPLICE MARKER DETAIL**  
N.T.S.

**NOTES**

- DUCT MARKERS SHALL BE INSTALLED AT BOTH EDGES OF PAVEMENT AND WHERE PROPOSED ELECTRICAL DUCTS CROSS BOTH NEW AND EXISTING PAVEMENTS.
- CABLE MARKERS SHALL BE INSTALLED AT ANY CHANGE OF DIRECTION AND EVERY 200' ALONG THE CABLE RUN.
- SPLICE MARKERS SHALL BE INSTALLED DIRECTLY OVER ANY HOME RUN DIRECT BURY SPLICES.
- THE COST OF FURNISHING AND INSTALLING MARKERS SHALL BE INCIDENTAL TO THE ASSOCIATED CABLE ITEMS.

- \* FRANGIBLE COUPLING LOCATED 1 1/2" (MAX.) ABOVE COVER AND DISCONNECT PLUG
- \*\* TOP 6" OF CONCRETE SHALL BE FORMED WITH A SMOOTH FINISH (24") DIA. SLOPED 1" TO THE FINISH GRADE
- \*\*\* GRADE TO DRAIN AWAY FROM LIGHT AND MATCH EXISTING. SOD DISTURBED AREA. COST INCLUDED IN LIGHT BID COST EXCEPT FOR SOD.

L-861 E MEDIUM INTENSITY RUNWAY THRESHOLD LIGHT 30 WATT QUARTZ / INCANDESCENT (L-125-5.2) OR (L-125-5.3) RED/OPAQUE OR RED GREEN. SEE PLAN FOR LOCATIONS.  
 L-861 MEDIUM INTENSITY RUNWAY EDGE LIGHT (MIRL). 30 WATT QUARTZ / INCANDESCENT (L-125-5.1)

STAINLESS STEEL COVER BOLTS WITH ANTI-SEIZE COMPOUND

5' (MIN). SLACK ON ALL CABLES

EXTERNAL GROUND LUG CONNECT #6 GROUND WIRE TO GROUND LUG

EXISTING SUB-GRADE

2" PVC SCH. 40 CONDUIT

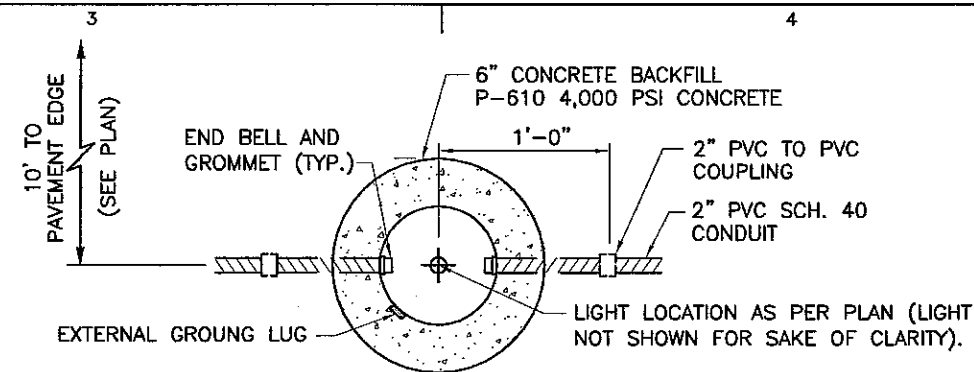
NO. 6 AWG STRANDED GROUND WIRE EXOTHERMICALLY WELDED TO GROUND ROD

3/4"x10' COPPER CLAD GROUND ROD AT EACH LIGHT (TYP.)

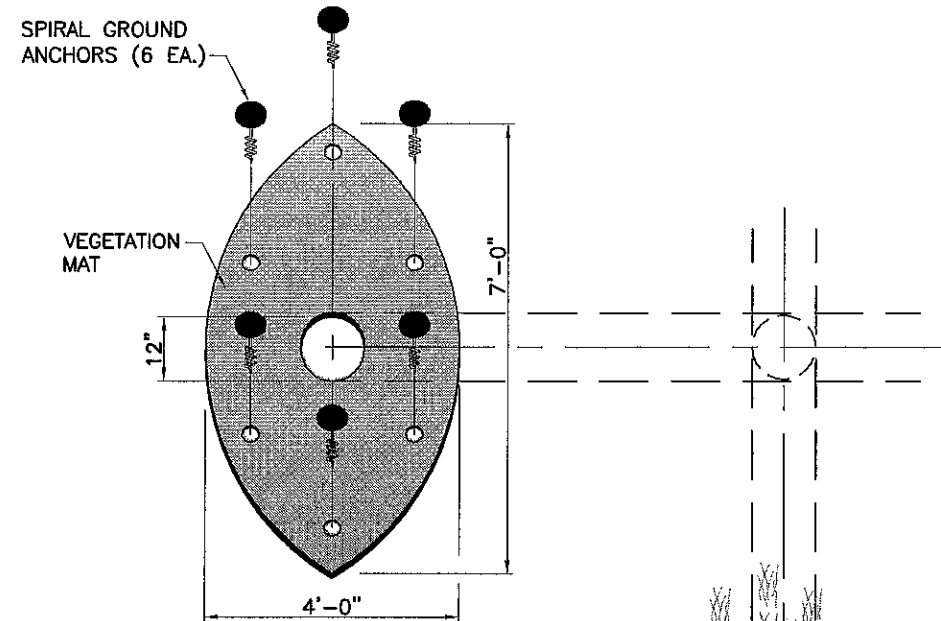
**BASE MOUNTED EDGE LIGHT - ELEVATION**  
 NTS

**NOTE:**

1. ALL ITEMS SHOWN ABOVE, EXCEPT 2" PVC CONDUIT, SOD AND 5 KVA NO. 8 CABLE TO BE INCLUDED IN PRICE BID FOR LIGHT.
2. VARIOUS HOLE LOCATIONS ARE REQUIRED. BASES SHALL BE OBTAINED WITH NECESSARY HOLES MADE AT THE FACTORY PRIOR TO GALVANIZING.
3. ALL TYPE C CABLE TO BE MEGGERED BETWEEN BASE CANS WITH RESISTANCE TO GROUND OF ANY SECTOR BEING INFINITY.
4. ALL COUNTERPOISE CONNECTIONS TO GROUND ROD SHALL BE EXOTHERMICALLY WELDED. COAT ANY EXPOSED COPPER/BRASS AT CONNECTION TO THE BASE CAN WITH A 6 MIL LAYER OF 3M SCOTCHKOTE ELECTRICAL COATING OR APPROVED EQUAL.
5. FOR THE NUMBER OF OPENINGS AND CONDUIT DESIGNATIONS REFER TO AIRFIELD LIGHTING LAYOUT.



**BASE MOUNTED EDGE LIGHT - PLAN**  
 NTS



**NOTES:**

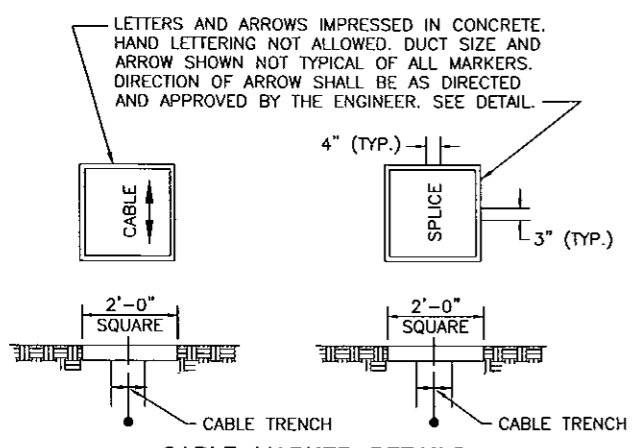
1. VEGETATION CONTROL MAT SHALL BE INSTALLED AT RUNWAY EDGE LIGHTS AT THE LOCATION DETERMINED BY THE ENGINEER IN THE FIELD.
2. VEGETATION CONTROL MATS SHALL BE "ECHO ADVISORY AIRFIELD MAT SYSTEM" FOOTBALL MAT FOR BASE CAN MOUNT OR APPROVED EQUAL.

**VEGETATION CONTROL MAT**  
 SCALE: 1"=3'-0"  
 (T-904-5.2)

BY:	
DESIGNED:	SAN
DRAWN:	MW
CHECKED:	SAN
DATE:	12/24/07
PROJECT NAME:	HILLSBOROUGH COUNTY AVIATION AUTHORITY <b>VANDENBERG AIRPORT</b> TAMPA - FLORIDA
SHEET TITLE:	PROJECT 18/36 LIGHTING CIRCUITS REHABILITATION AIRFIELD DIRECTIONAL SIGNAGE ON TAXIWAYS <b>LIGHTING DETAILS (1)</b>
FILE NAME:	D:\Engineering\Projects\YAN\3345 08 - Runway 18-36 Lighting Circuits Rehab\CAD\C-26.dwg
HCAA NO.:	3345 08 / 5270 08
DATE:	12/24/07
<b>C-26</b>	

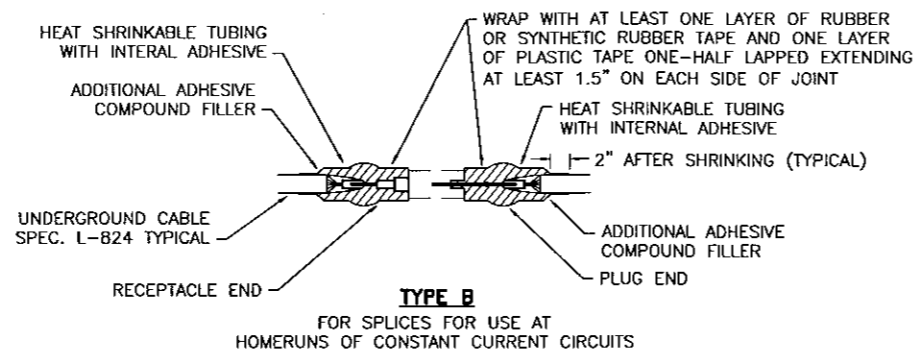


**NOTES:**  
 1. THE RESISTANCE TO GROUND OF ANY GROUNDING SYSTEM SHALL NOT EXCEED 10 OHMS.  
 2. COST OF GROUND RODS AND CONNECTION TO COUNTERPOISE IS INCIDENTAL TO ASSOCIATED ITEMS REQUIRING GROUNDING.  
 3. MAXIMUM SPACING OF GROUND RODS FOR LIGHTING SYSTEMS SHALL NOT EXCEED 500 FEET.

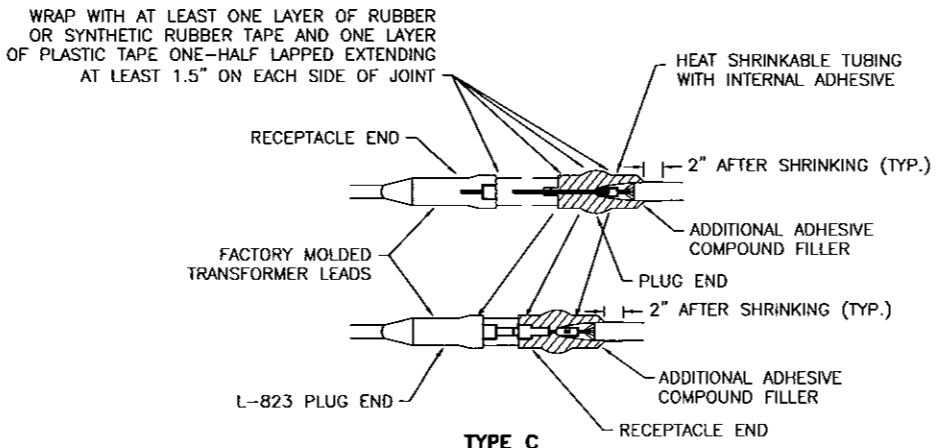


**CABLE MARKER DETAILS**  
 N.T.S.

**NOTE:**  
 1. NO SEPARATE PAYMENT SHALL BE MADE FOR DUCT/CABLE MARKERS. COST OF MARKERS SHALL BE INCLUDED IN PRICE QUOTED IN THE BID SCHEDULE FOR DUCT OR CABLE INSTALLATION.



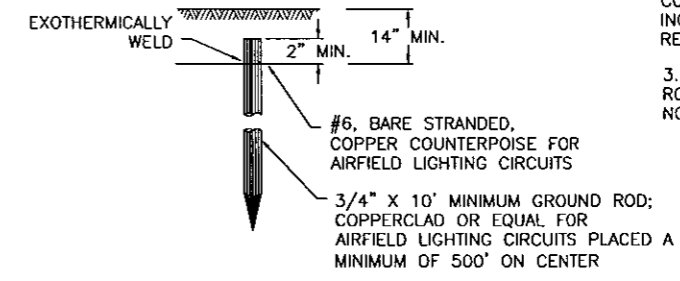
**TYPE B**  
 FOR SPLICES FOR USE AT HOMERUNS OF CONSTANT CURRENT CIRCUITS



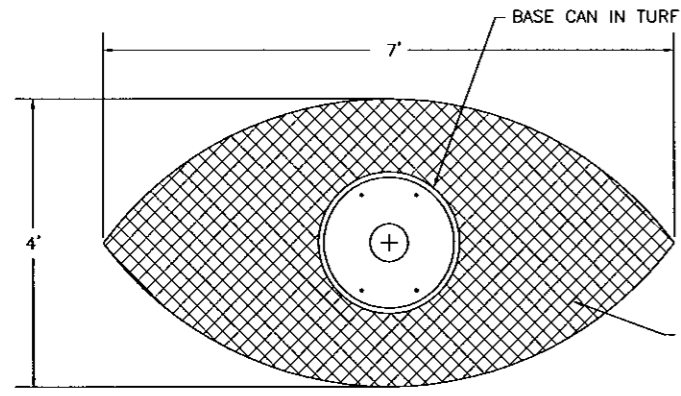
**TYPE C**  
 FOR SPLICES AT LIGHTS

**NOTES:**  
 1. INSIDE DIAMETER OF CONNECTOR SHALL PROPERLY MATCH THE OUTSIDE OF CABLE.

**CABLE SPLICE DETAILS**  
 N.T.S.



**GROUND ROD DETAIL**  
 N.T.S.

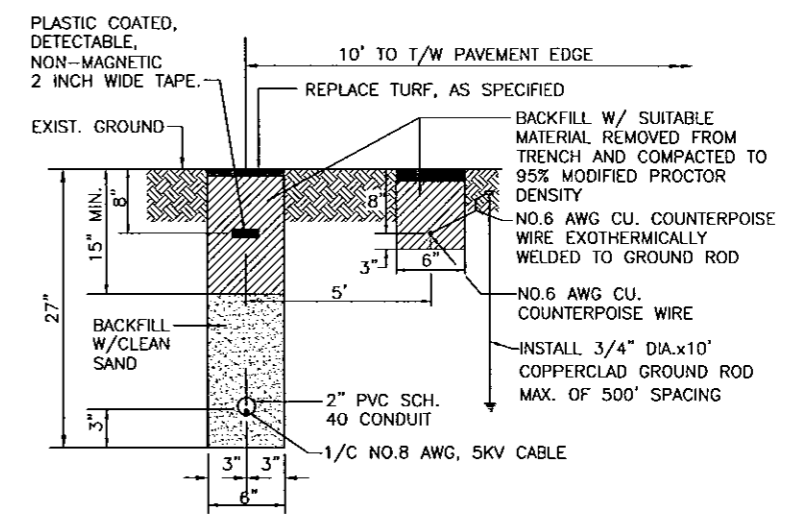


**PLAN**

**MAT DETAIL FOR BASE MOUNTED LIGHT IN TURF**  
 N.T.S.

**NOTES:**  
 1. CONTRACTOR SHALL ENSURE THAT TAXIWAY EDGE LIGHT IS NOT DAMAGED DURING INSTALLATION OF "FOOTBALL MAT". ANY COST TO REPAIR OR REPLACE LIGHT CANS OR FIXTURES DAMAGED BY MAT INSTALLATION SHALL BE BORNE BY THE CONTRACTOR.

"FOOTBALL MAT WITH INSERT FOR BASE CAN", BY ECHO ADVISORY OR EQUAL, TO BE INSTALLED PER MANUFACTURER'S RECOMMENDATIONS. MAT SHALL BE INSTALLED ON BASE MOUNTED TAXIWAY EDGE LIGHTS IN TURF.



**CABLE IN CONDUIT TURF TRENCH DETAIL**  
 N.T.S.

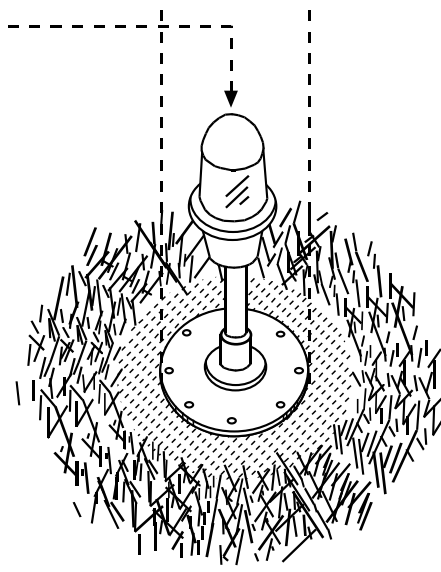
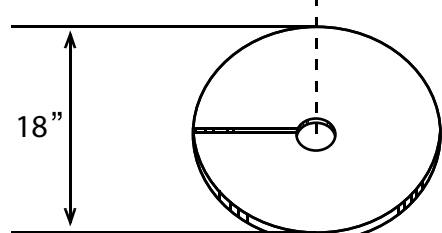
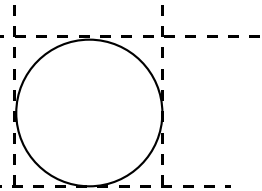
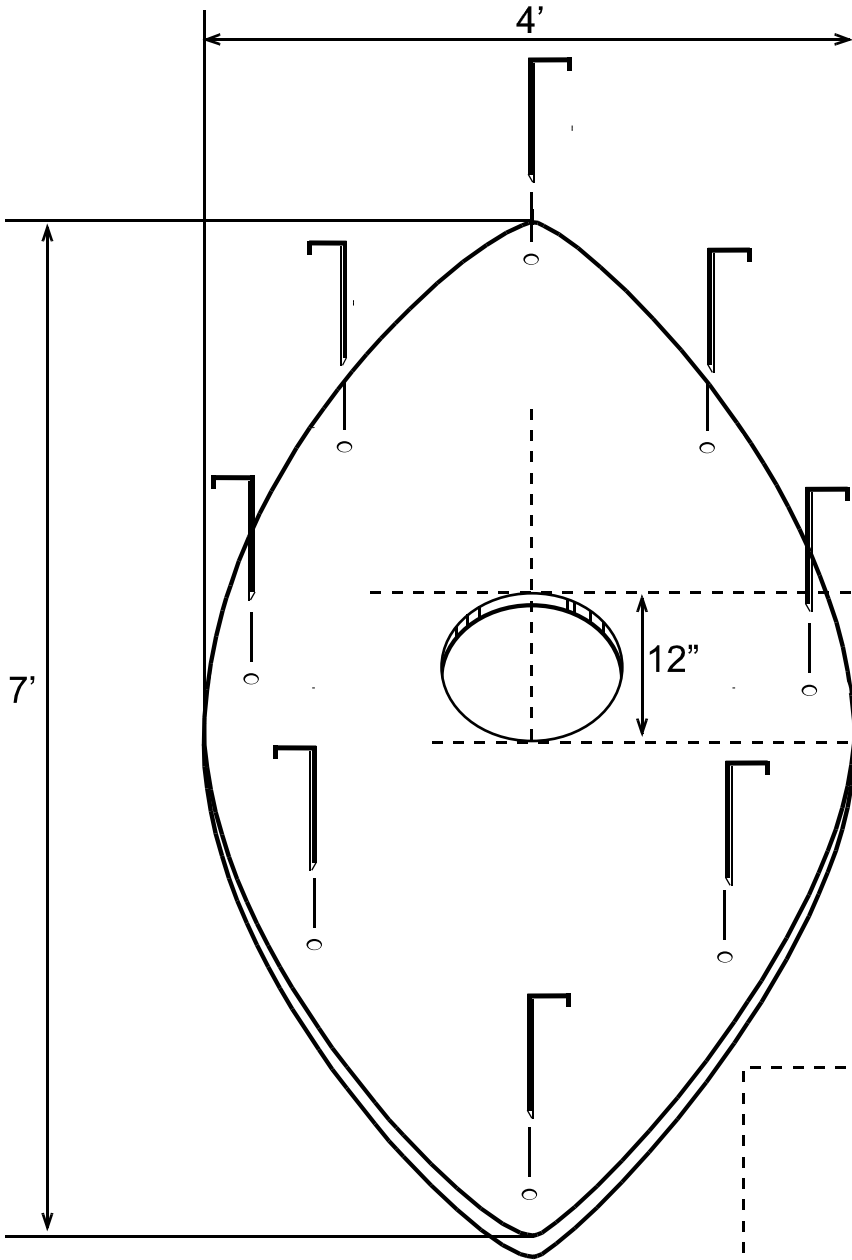
DATE	DESCRIPTION	BY	AUTH	DAVID E. SCHMIDGALL	PM: SGH	MARIANNA MUNICIPAL AIRPORT
				P.E. NO. 66480	DWG. BY: DES	<b>CONSTRUCT PARTIAL PARALLEL TAXIWAY</b>
					CHK. BY: SGH	
					DSG. BY: DES	
					SCALE: AS NOTED	
				URS Corporation 7650 West Courtney Campbell Causeway Tampa, FL 33607-1462 Tel: 813.286.1711	PROJECT NO. 12010206.00000	SHEET TITLE <b>LIGHTING DETAILS (1)</b>
					DATE: FEBRUARY, 2012	SHEET NO. <b>C3.02</b>

FILE NAME: I:\Marianna\12010206 Partial Parallel Turf\Project Drawings\C3-02-CONCRETE-DETAIL-1.dwg  
 LAYOUT NAME: Layout1  
 PLOTTED: Friday, March 02, 2012 - 10:55am  
 USER: dave\_schmidgall



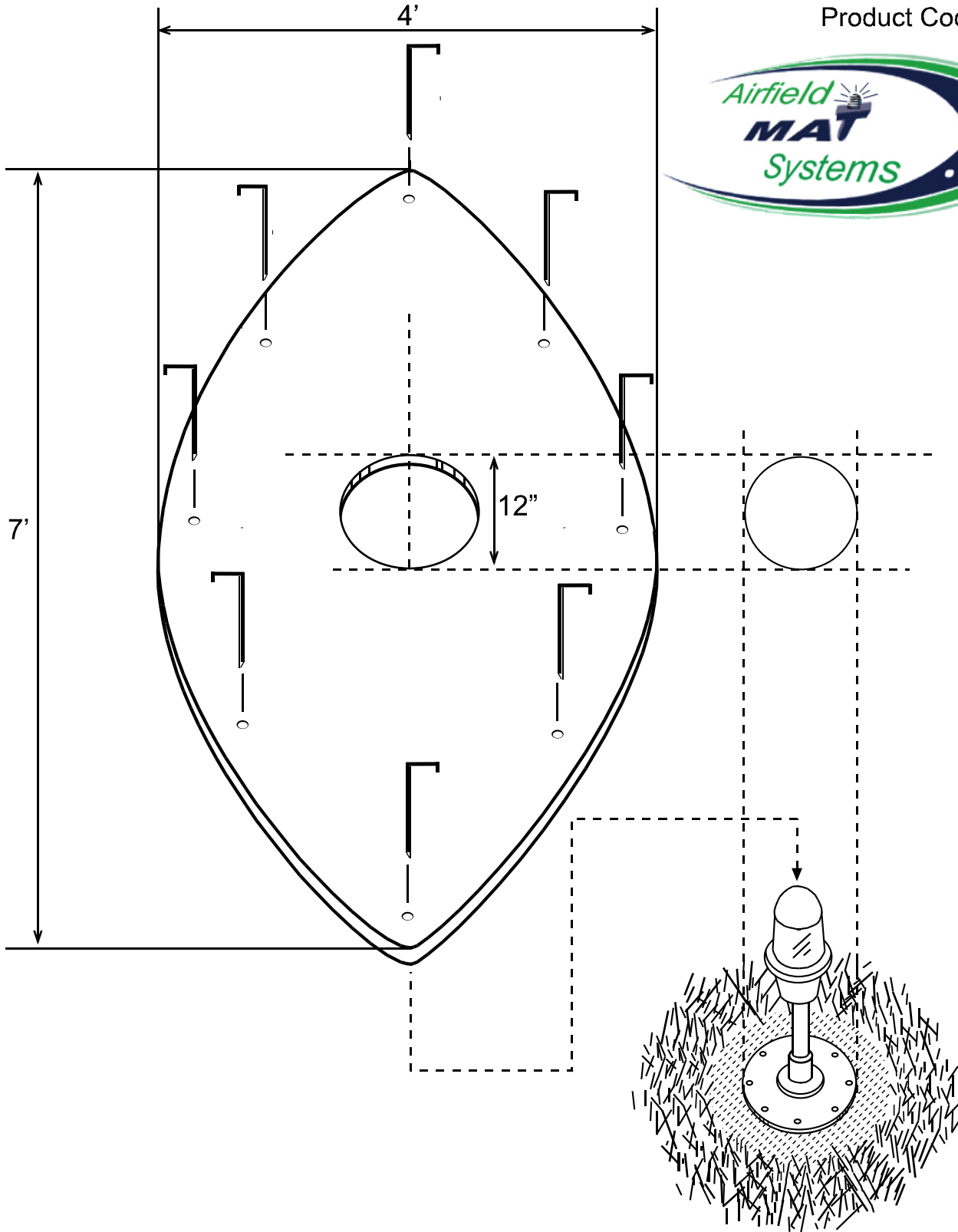
Football Mat for Can Mounted lights

Product Code: FM-1-8wi-18



Football Mat for Can Mounted Lights

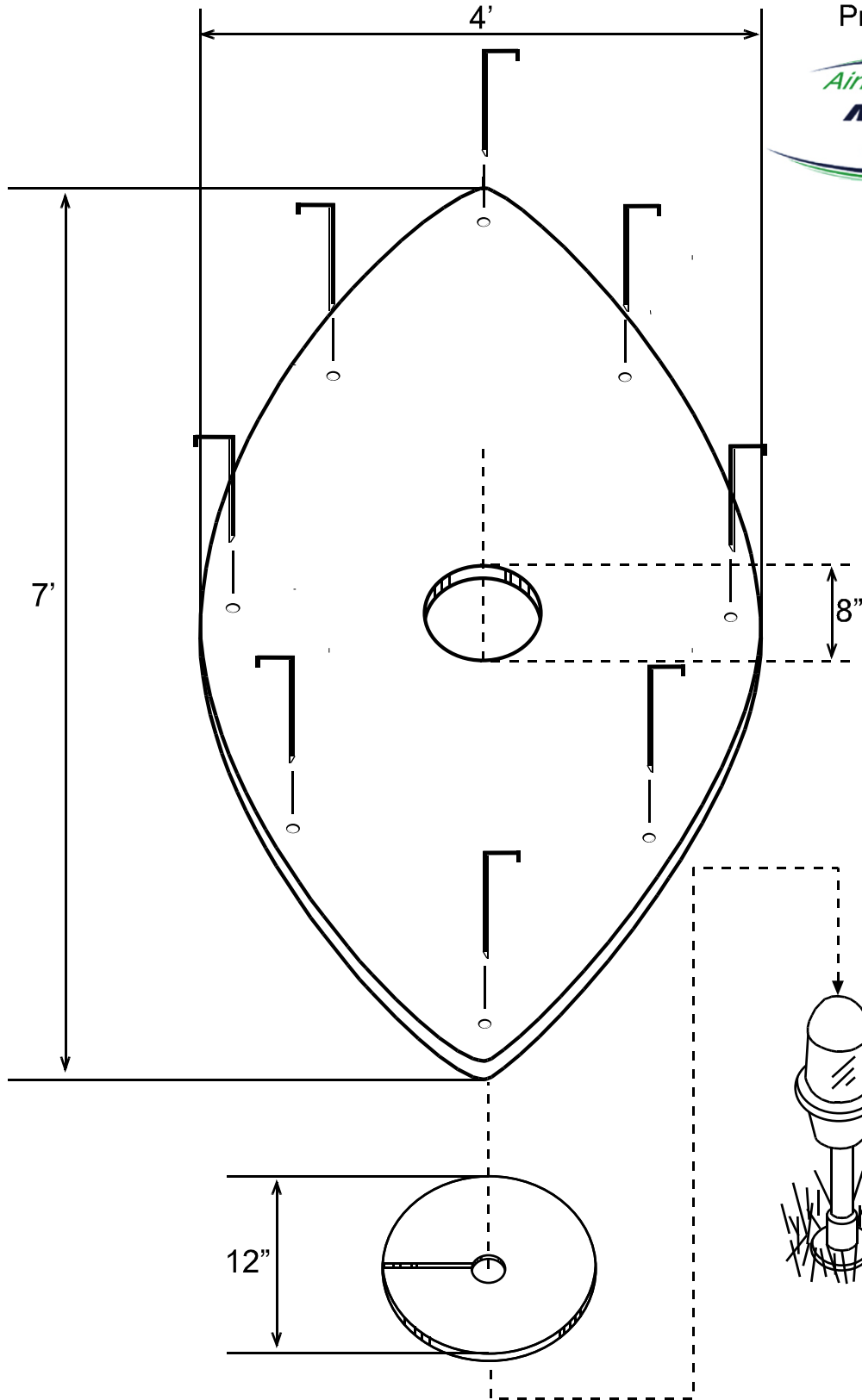
Product Code: FM-1-8





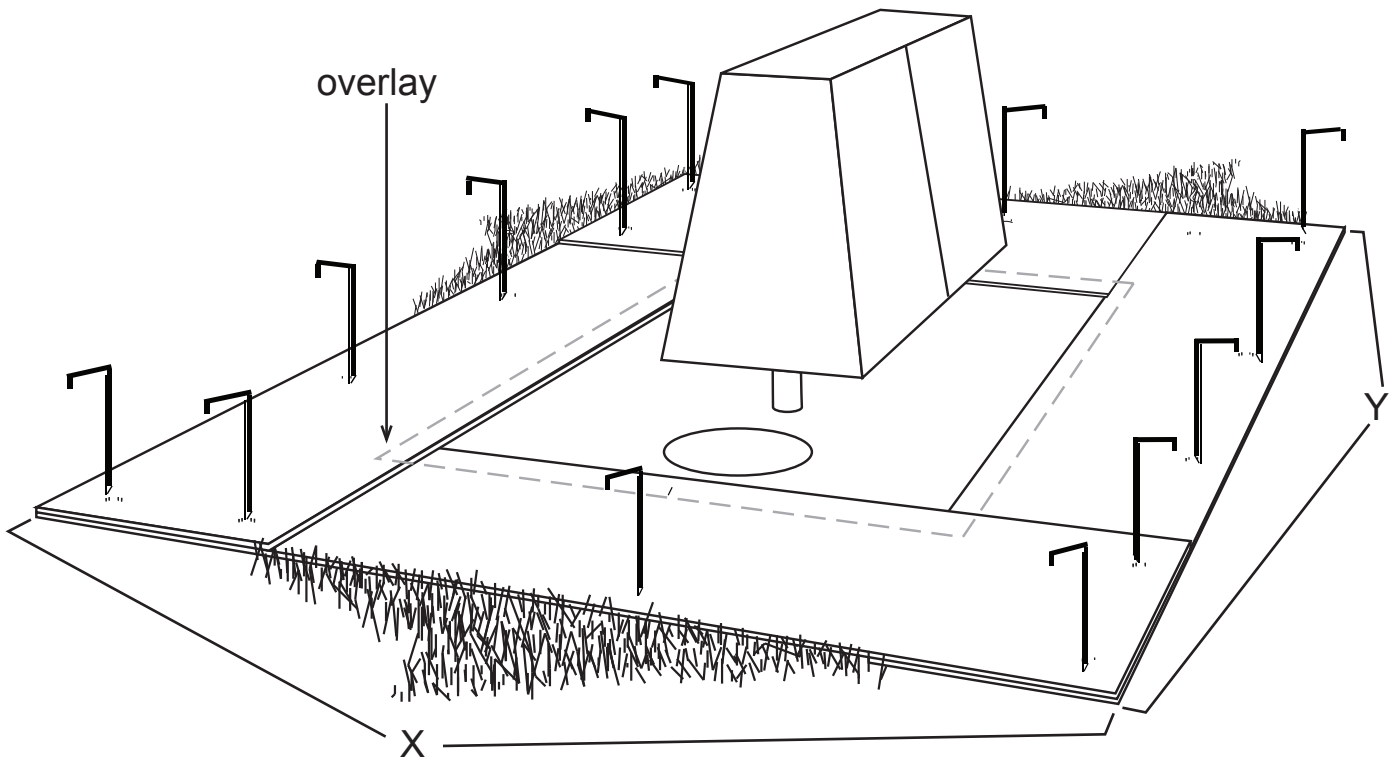
Football Mat with insert for Stake Mounted Light

Product Code: FM-1-8wi



Strip Mat

Product Code: SM-1  
SM-2



Length needed = perimeter extending 2 feet from base =  $2X + 2Y$

SM-1: 30ft Length - 10 Anchors

SM-2: 60ft Length - 20 Anchors